

“Peach Hill is a magnificent place, an old orchard ringed by woods on several sides, where deer and wild turkeys can be seen and the sounds of nature savored. As the highest point in town, it offers panoramic views of the Hudson Valley, including the Hudson Highlands, Catskills and the Shawungunk Mountains.”

The Friends of Peach Hill

When Peach Hill was offered for sale, a small group set out to save this beautiful hill from development and open it to the public. This group has become the Friends of Peach Hill.

“The Friends” have worked with all levels of government and not-for-profit groups to secure, develop and manage the park.

We are looking for volunteers to help with trail construction, fundraising, park cleanup, gate stewardship and community awareness. If you would like to get involved, please email the Friends at volunteer@peachhill.org.



Park Entrance located at 34 Edgewood Dr.

Edgewood Drive is off Salt Point Turnpike (NYS Route 114) 1 mile northeast of St. Peter's Cemetery. It is across from the Dutchess Racquet Club.

Why are there no peach trees on Peach Hill ?

The hill was originally a peach orchard owned by the Van Kueren family. It was purchased in 1948 by Charles Beck who grew peach, pear and apple trees. In 1967, William Paladino bought it and grew apples exclusively. There were about 10,000 trees when Bill Paladino, Jr. stopped actively farming the orchard in 1998.

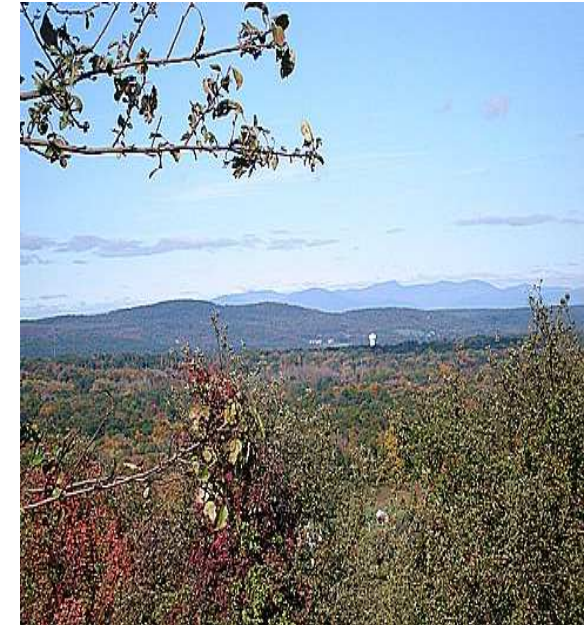
Park Rules

- **No motor vehicles** (including ATVs, motorcycles and snowmobiles)
 - **No hunting**, trapping or carrying firearms.
 - **Gate locked at dusk.** Park hours 7 AM to 9 PM.
 - **No alcoholic beverages.**
 - **Dogs must be kept leashed** and cleaned up after.
 - **No fires.**
- Violations punishable by fines up to \$250.**
Per Chapter 148-Town of Poughkeepsie Code

Warning

This park was formerly an apple orchard where agricultural pesticides were used. Such pesticides may present a health risk if ingested. Please remain on the marked trails and do not come in direct contact with the soil.

PEACH HILL PARK

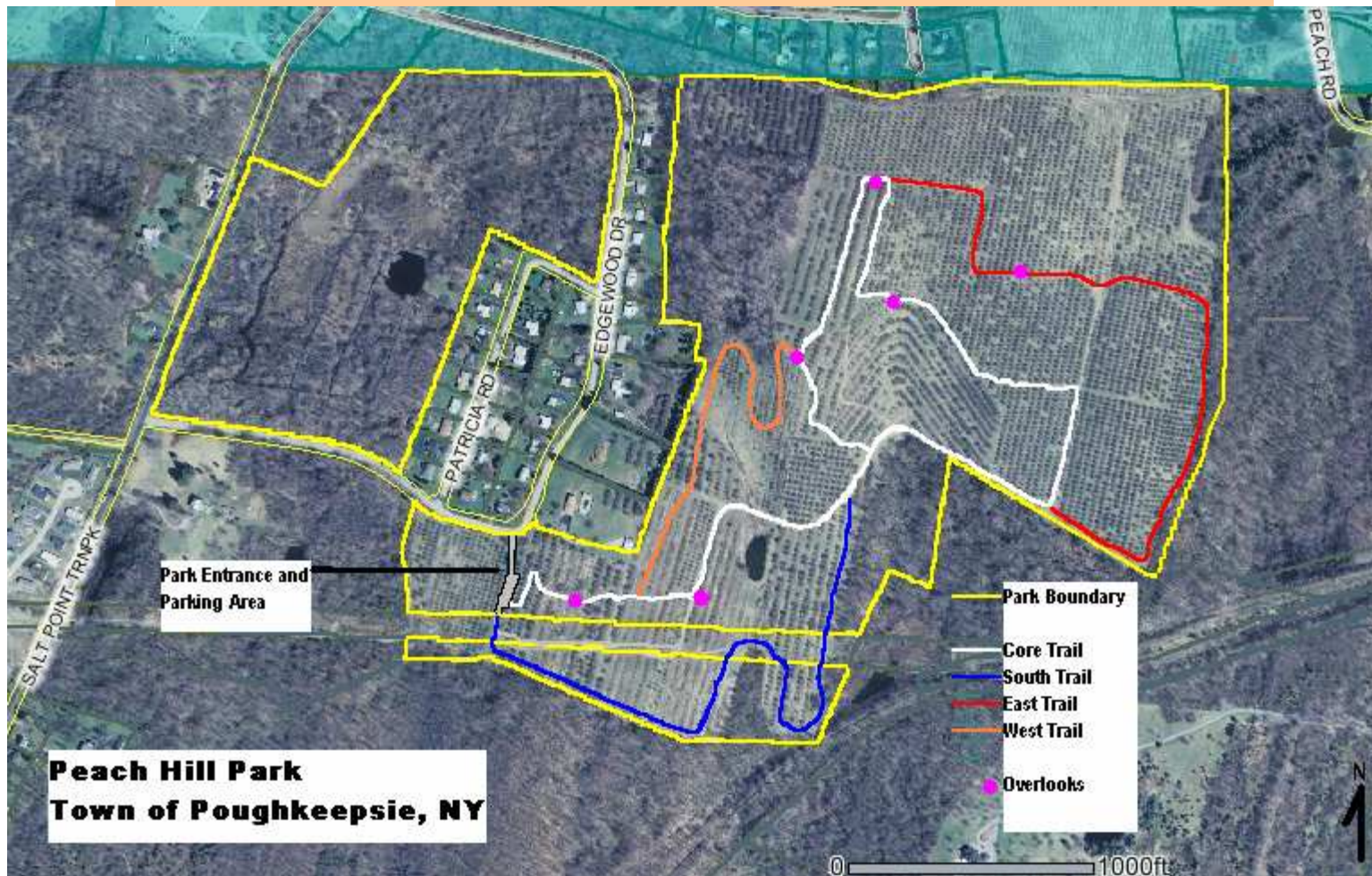


A 159 acre passive use, open space park for walking, picnicking, geocaching, cross country skiing, painting and photography.

**Managed by
The Friends of Peach Hill and
The Town of Poughkeepsie Recreation Department**

For information call (845) 485-3628.

Trail Map and Trail Descriptions



- The **Core Trail** (white markers) is a 1.65 mile round trip from the parking area to the Catskill overlook and return. The best overlooks in the park are found along this trail. The elevation rises gradually from 250 feet above sea level to 465 feet at the Catskill overlook in 0.96 miles.
- The **Loop Trails** provide alternate routes through the park.
 - The **South Trail** (blue markers) is very hilly. It is 0.61 miles long.
 - The **East Trail** (red markers) provides a gradual climb to the summit with a overlook to the east. It is 0.64 miles long.
 - The **West Trail** (orange markers) is 0.47 miles long including a steep climb.

"Please - leave nothing but footprints, take nothing but memories.... and apples."