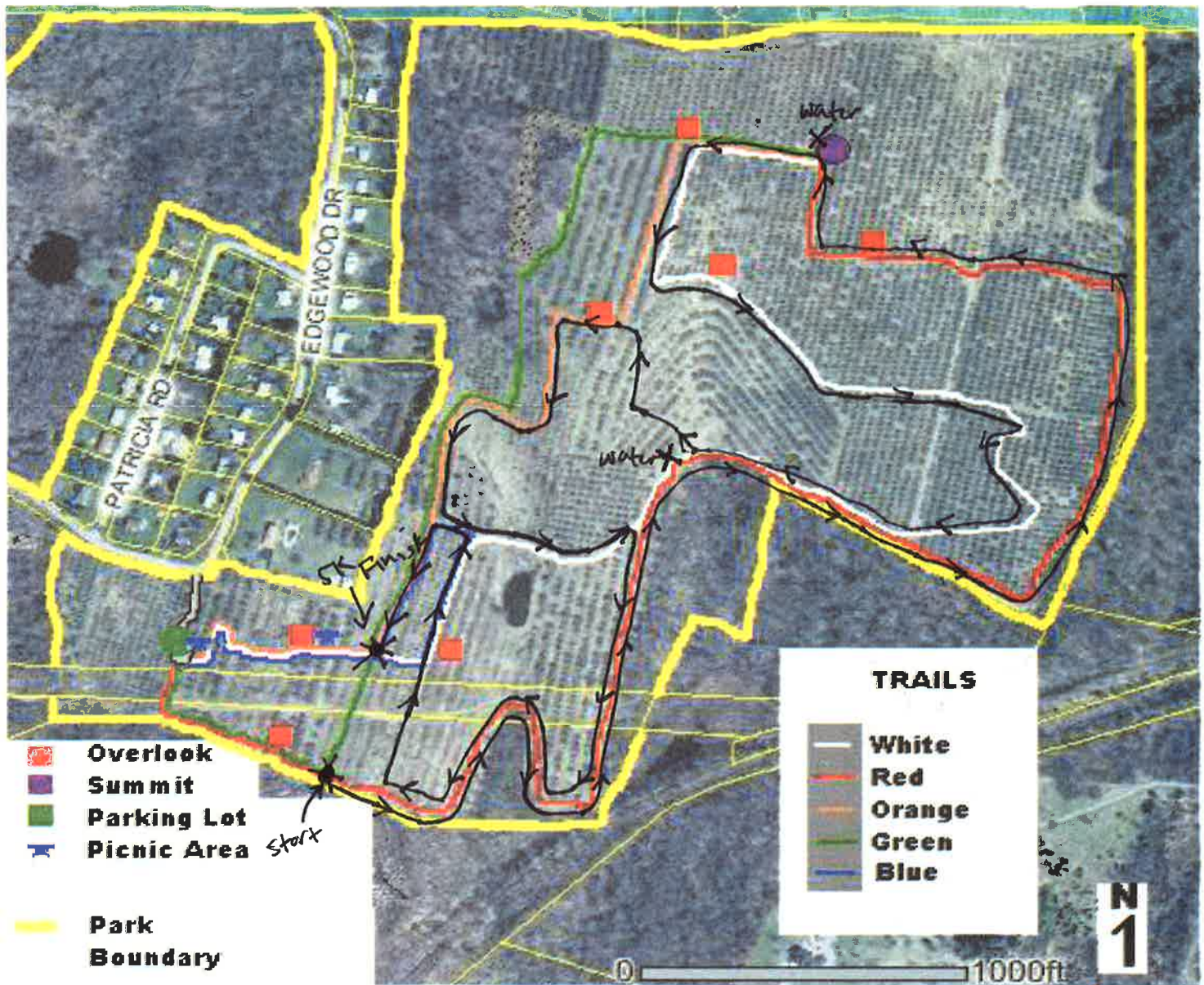


Trail Map and Trail Descriptions

Peach Hill 5K Race Route



- The **Gravel Trail** (blue markers) is an easy 0.4 mile round trip loop from the parking area. It goes through meadows, the orchard, overlooks and passes the picnic area, providing an easy trail to "discover" of the park.
- The **Other Trails** provide routes from parking lot to the summit of Peach Hill. The elevation rises from 250 feet above sea level at the parking lot to 485 feet at the summit (the highest point in the town).
 - The **White Trail** meanders through the old apple orchard. It has a moderate climb with several nice overlooks. It is 1.2 miles long.
 - The **Red Trail** provides a gradual climb to the summit. It is 1.4 miles long. On this trail many aspects of local history invite discovery.
 - The **Orange Trail** is 0.9 miles long including a steep climb. Along the way you will marvel at the local geology from several unforgettable overlooks.
 - The **Green Trail** takes the hiker through five different habitats. Along the way learn the identity of common trees and shrubs. It is 0.8 miles long with a moderate climb.

Please - leave nothing but footprints, take nothing but memories....and apples.